

DRAWING NUMBER
46/183

DRAWING NUMBER

DRAWING NUMBER

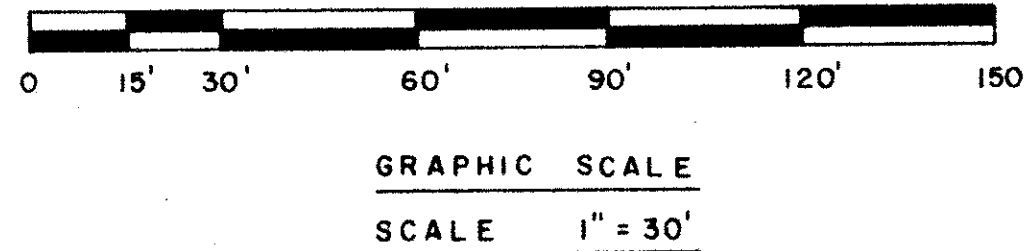
DRAWING NUMBER

REPLAT OF TRACT 4, PLAT NO. 1, MANOR FOREST A P.U.D.

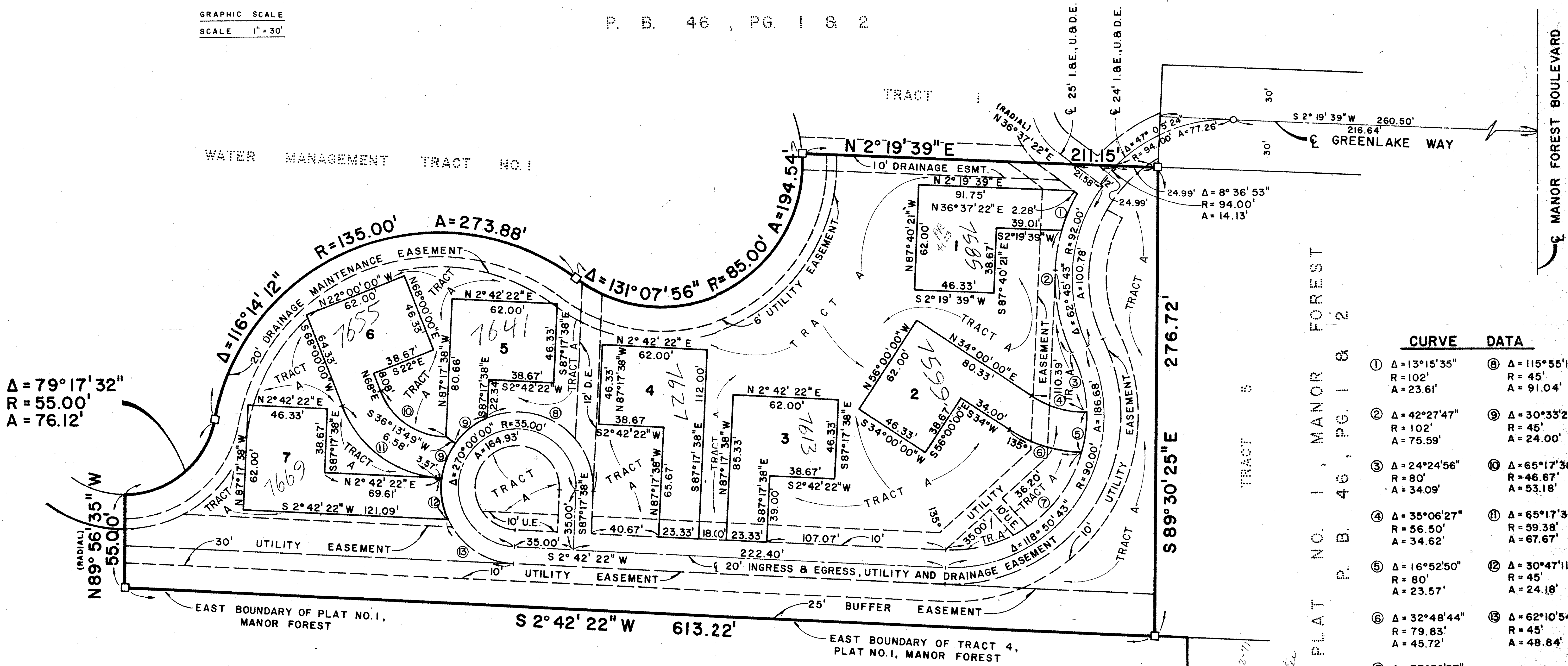
SEPTEMBER 1983
SHEET 2 OF 2

183

STATE OF FLORIDA
COUNTY OF PALM BEACH
This Plat was filed for record at
M. this day of 1983
and duly recorded in Plat Book No.
on Page
John B. Dunkle, Clerk Circuit Court
By _____ D.C.



PLAT NO. 1, MANOR FOREST
P. B. 46, PG. 1 & 2



CURVE DATA	
① Δ = 13°15'35" R = 102' A = 23.61'	⑥ Δ = 115°55'11" R = 45' A = 91.04'
② Δ = 42°27'47" R = 102' A = 75.59'	⑨ Δ = 30°33'22" R = 45' A = 24.00'
③ Δ = 24°24'56" R = 80' A = 34.09'	⑩ Δ = 65°17'38" R = 46.67' A = 53.18'
④ Δ = 35°06'27" R = 56.50' A = 34.62'	⑪ Δ = 65°17'38" R = 59.38' A = 67.67'
⑤ Δ = 16°52'50" R = 80' A = 23.57'	⑫ Δ = 30°47'11" R = 45' A = 24.18'
⑥ Δ = 32°48'44" R = 79.83' A = 45.72'	⑬ Δ = 62°10'54" R = 45' A = 48.84'
⑦ Δ = 77°32'57" R = 80' A = 108.28'	

SUB'D. SE. 1/4 SEC. 12 - 45 - 42
P. B. 9, P. 74

SUBMISSION *
BOOK FLOOD ZONE
QUAD *
SE
PUD NAME
PAGE FLOOD MAP *
DATE
JOB CODE

0278-301

EWING AND SHIRLEY, INC.
land surveyors and planners

**MICHAEL B. SCHORAH
& ASSOCIATES, INC.**
ENGINEERS * PLANNERS * DEVELOPMENT CONSULTANTS
TEL. (305) 968-0080
1850 FOREST HILL BLVD., SUITE 205
WEST PALM BEACH, FLORIDA 33408

THIS INSTRUMENT WAS PREPARED BY KENT W. EWING, JR.
IN THE OFFICE OF EWING AND SHIRLEY, INC.
3767 LAKE WORTH ROAD, SUITE 118
LAKE WORTH, FLORIDA 33461

46/183

*Pl. 02-71
RS PUD
SFD Design Center*